

Resistenzepidemiologie – Entwicklungen bei gramnegativen Erregern

Sören Gatermann

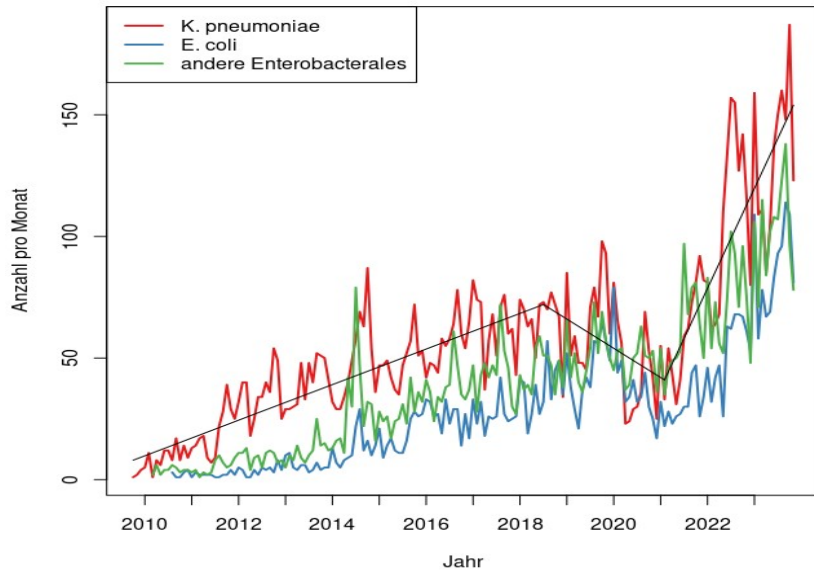


Nationales Referenzzentrum für gramnegative Krankenhauserreger

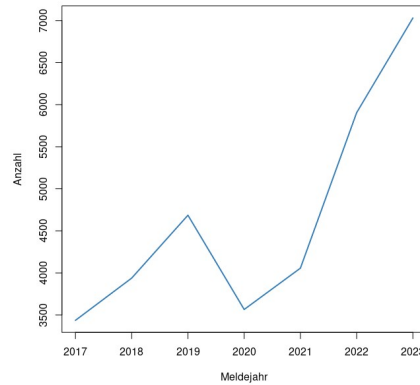
RUHR
UNIVERSITÄT
BOCHUM

RUB

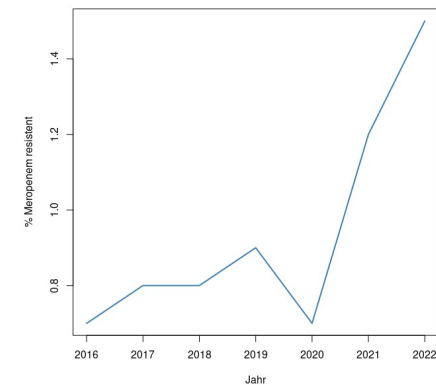
Deutliche Zunahme von CRE



Meldezahlen
Enterobacteriales



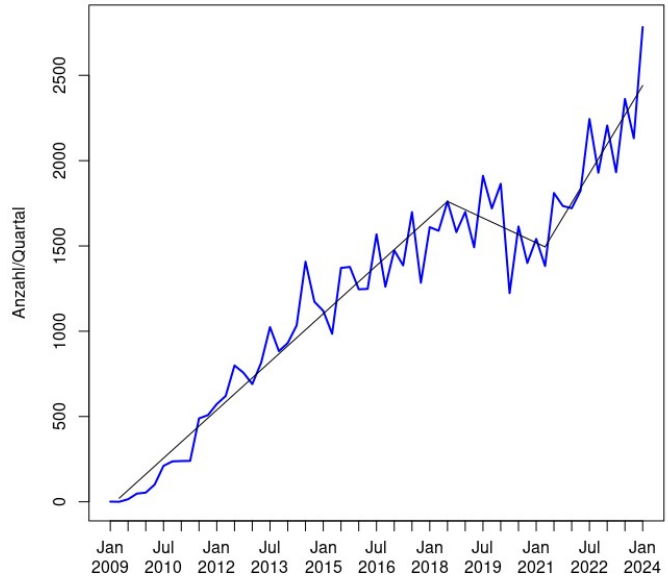
ARS
K. pneumoniae Meropenem



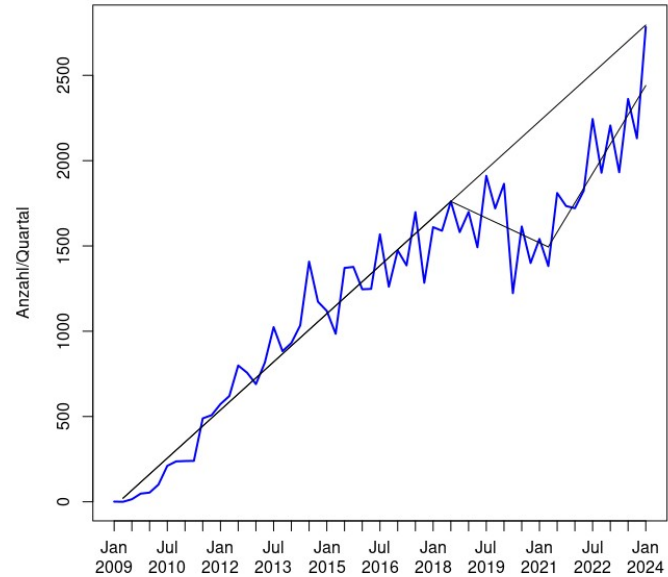
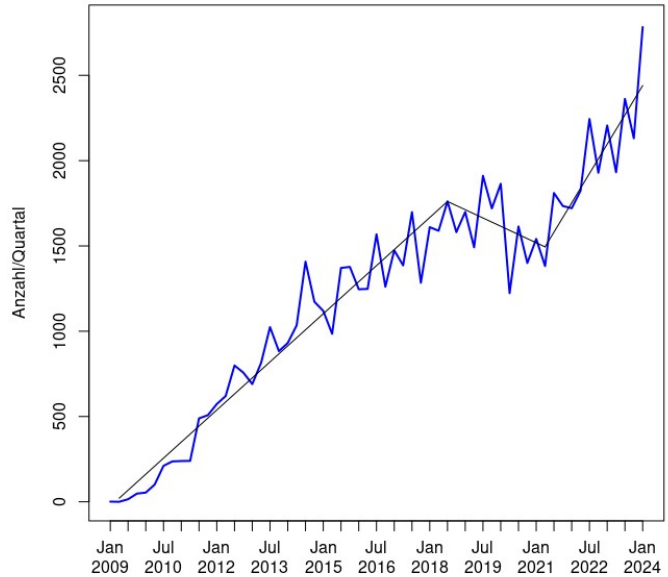
Abfrage SurvStat und ARS 2023-12-03
ARS: Intensivstationen



Einsendungen 2023



Einsendungen 2023

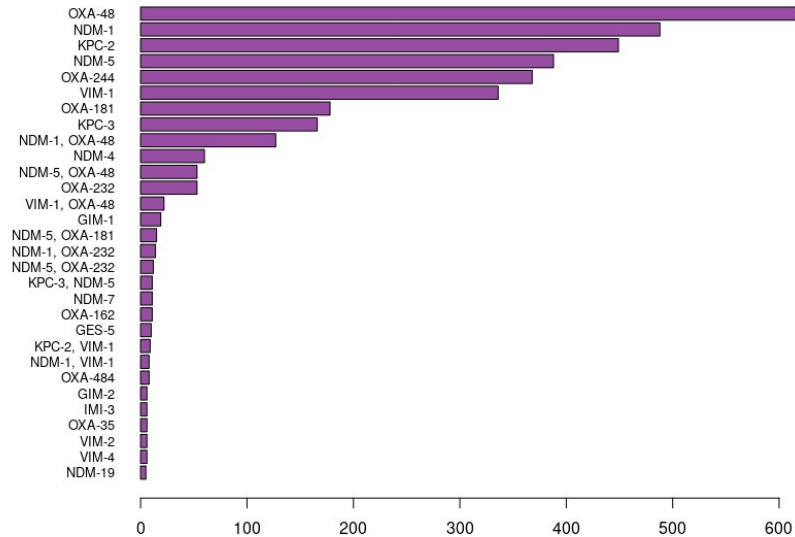


Anstieg der Carbapenemasenachweise



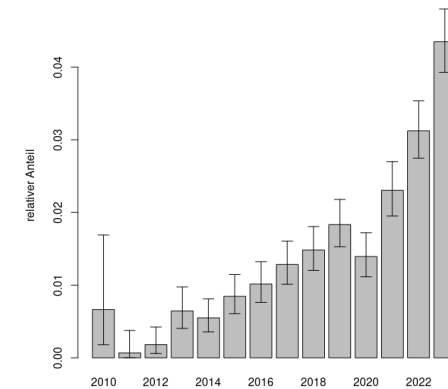
Enterobacterales: Mehr MBL und Doppelcarbapenemasen

Enterobakterien
2023

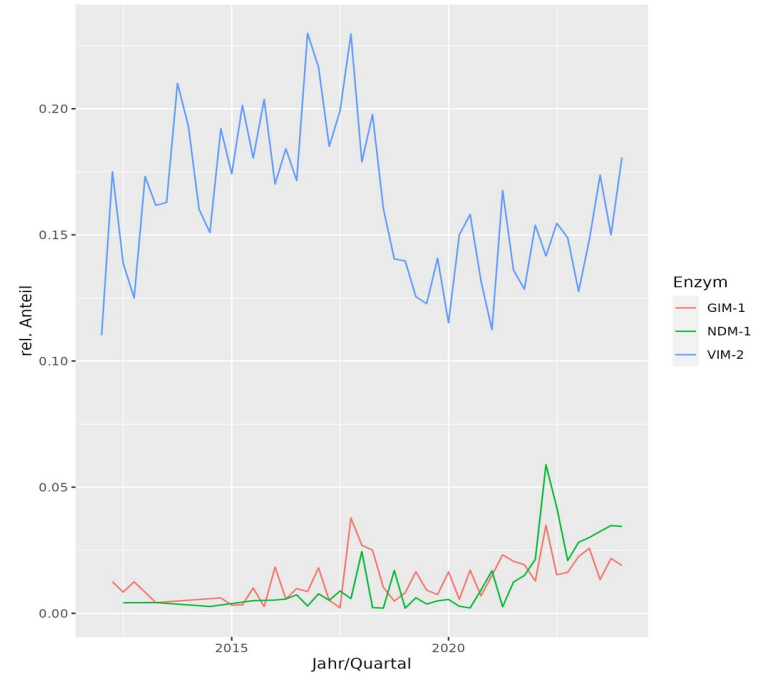
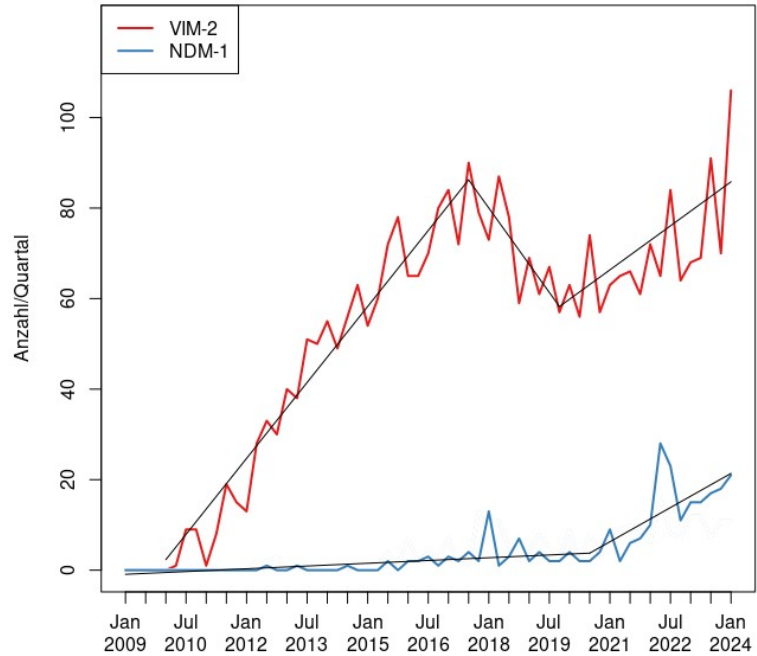


OXA-48-like	1255	39%
MBL (NDM/VIM)	1346	42%
KPC	616	19%

Doppelcarbapenemasen



P. aeruginosa



Enterobacterales

K. pneumoniae und *E. coli*

	Ceftazidim-Avibactam		Meropenem-Vaborbactam			Cefiderocol		
	S	R	S	R	ATU	S	R	ATU
OXA-48	99,4	0,6	50,4	49,6	15,2	74,5	25,5	17,4
OXA-244	99,7	0,3	89,9	10,1	5,3	80,2	19,8	12,4
NDM-1/-5	0,5	99,5	0,2	99,8	5,6	4,3	95,7	12,1
VIM-1	0,5	99,5	15,3	84,7	38,3	36,6	63,4	34,4



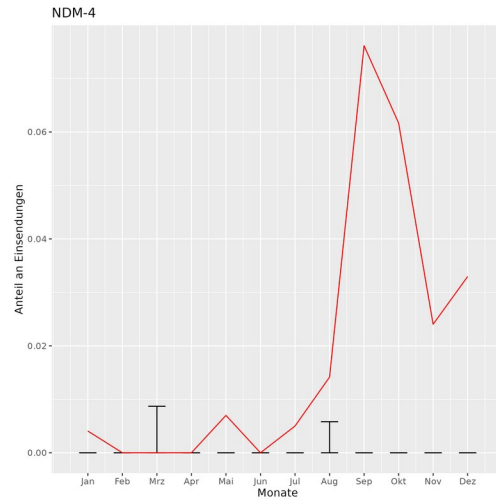
Pseudomonas

P. aeruginosa

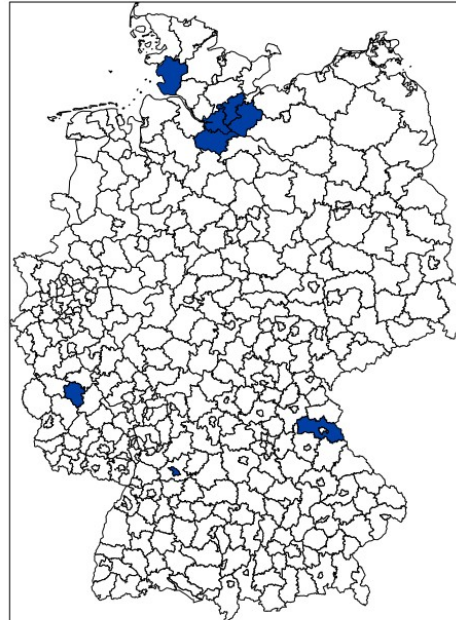
	Ceftazidim-Avibactam			Meropenem-Vaborbactam		Cefiderocol		
	S	R	ATU	S	R	S	R	ATU
NDM-1		100			100	5,5	94,5	19,5
VIM-2	0,2	99,8		6,7	93,3	91,7	8,3	2,6
Kein Enzym	16,1	83,9	10,5	14,3	85,7	88,2	11,8	5,5



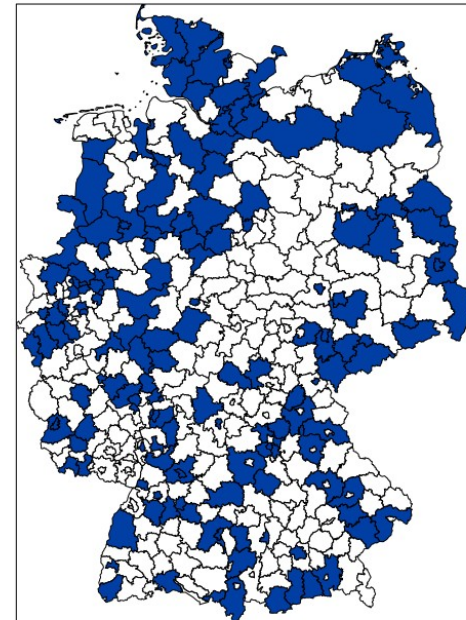
K. pneumoniae mit NDM-4



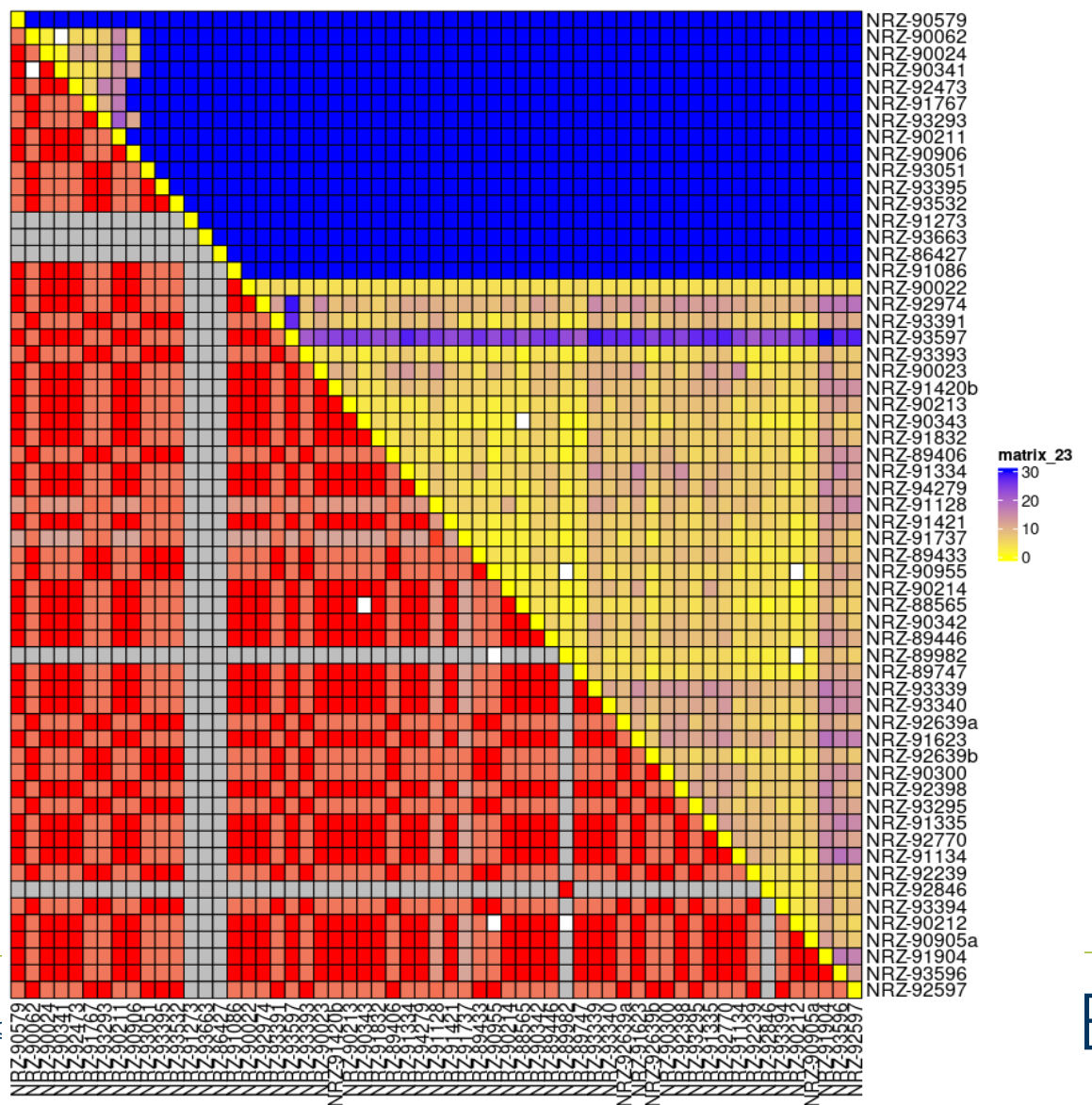
NDM-4 nach Kreisen



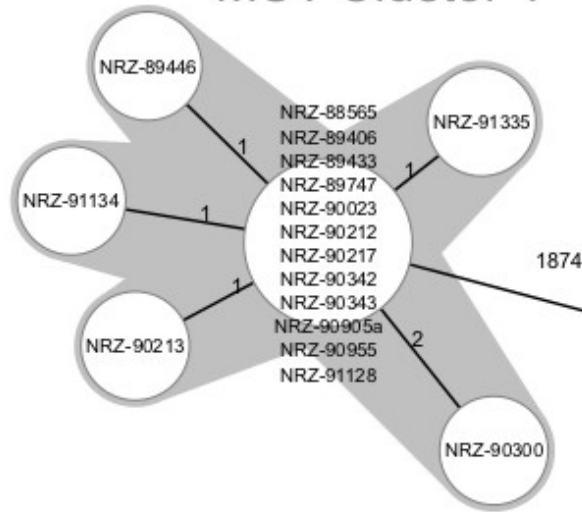
NDM nach Kreisen



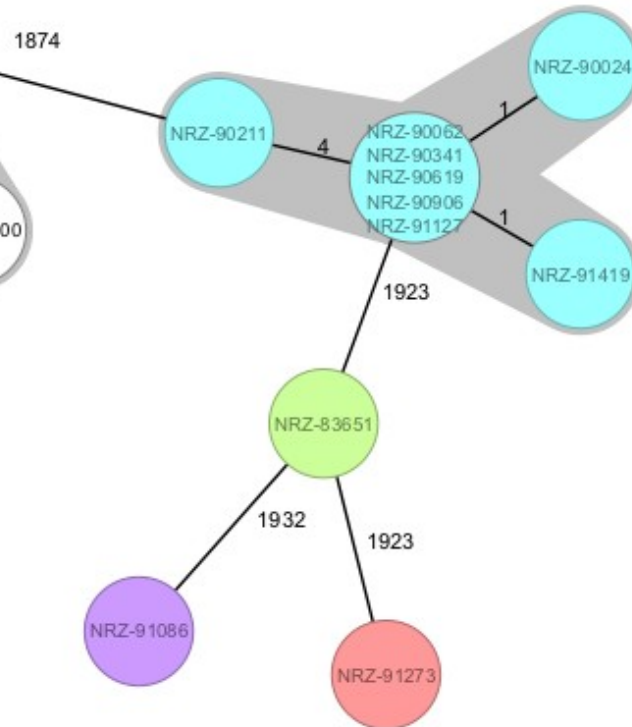
K. pneumoniae NDM-4



MST Cluster 1



MST Cluster 2



Color grouped by column "ST":

● 16

● 25

● 101

● 1805

○ no group assigned

Messages

- Gramnegative mit Carbapenemase nehmen zu
- Wir werden ein MBL-Land
- Zur Ausbruchserkennung wird die genaue Carbapenemase gebraucht

